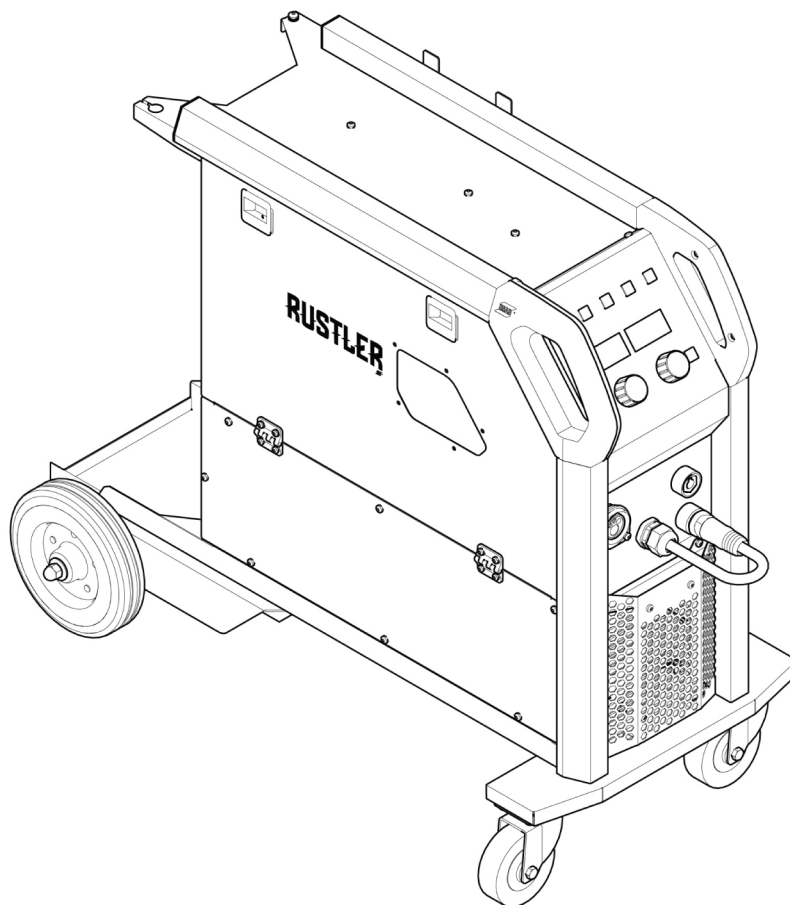


Rustler EM 280 PRO



Spare parts list

Ordering no.	Denomination	Notes
0700 401 201	Rustler EM 280 PRO	
0448 534 *	Instruction manual	NAM
0448 543 001	Service manual	NAM

Spare parts may be ordered through your nearest ESAB dealer, see esab.com. When ordering, please state product type, serial number, denominations and ordering numbers according to the spare parts list. This facilitates dispatch and ensures correct delivery.

Maintenance and repair work should be performed by an experienced person, and electrical work only by a trained electrician. Use only recommended spare parts.

For accessories to the product, see the instruction manual.

The three last digits in the document number show the version of the manual. Therefore they are replaced with * here. Make sure to use a information with a serial number or software version that corresponds with the product, see the front page of the manual.

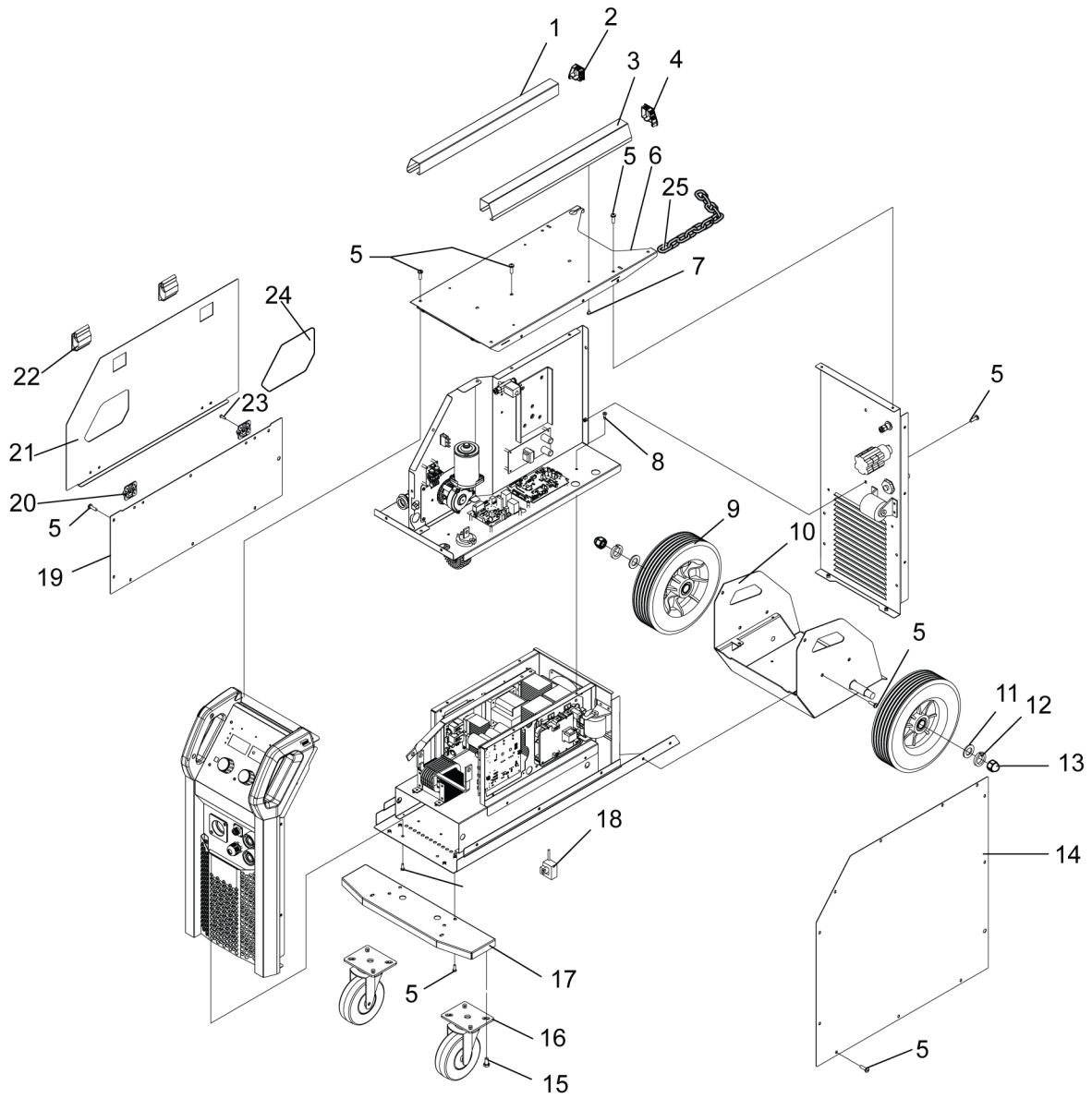
TABLE OF CONTENTS

- 1 SPARE PARTS 4**
- 1.1 Housing module 4**
- 1.2 Rear panel assembly 6**
- 1.3 Front panel assembly 8**
- 1.4 Intermediate plate assembly 10**
- 1.5 Feeder mechanism module 12**
- 1.6 Bottom panel assembly 14**

1 SPARE PARTS

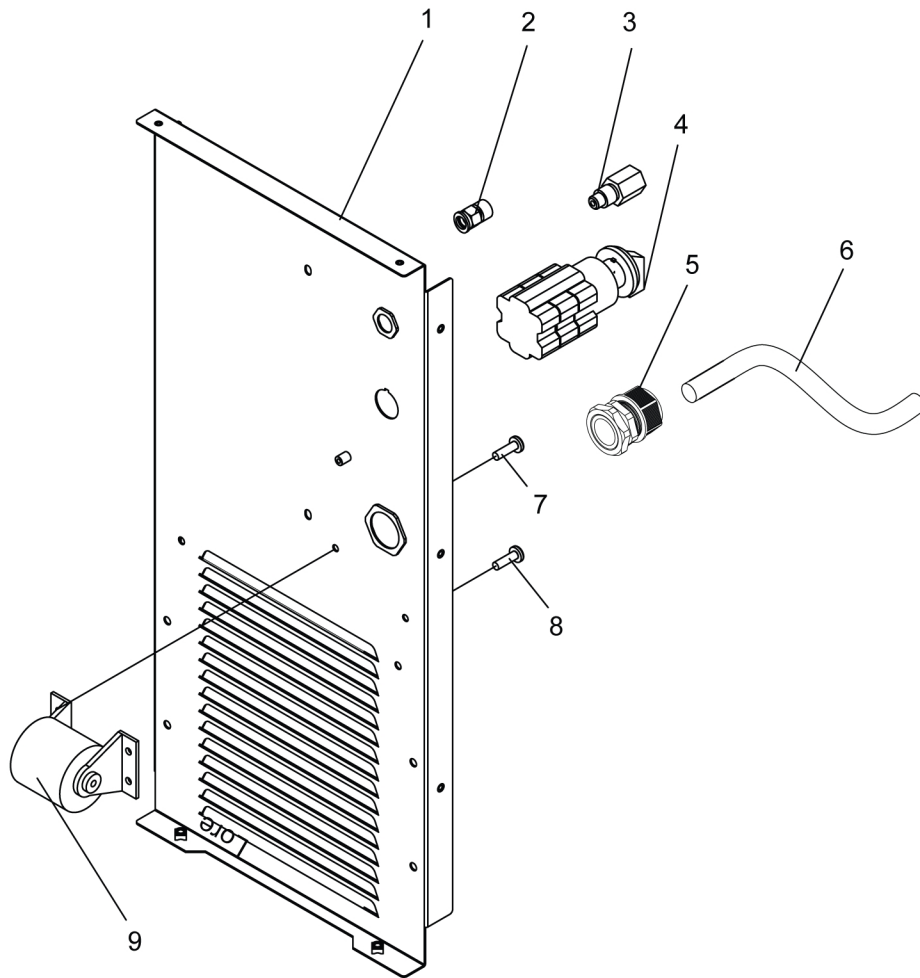
1.1 Housing module

C = Component designation in the circuit diagram					
Item	Qty	Ordering no.	Denomination	Notes	C
1	1	0558 103 022	Top panel cross beam right		
2	1		Cover for cross beam right		
3	1	0558 103 024	Top panel cross beam left		
4	1		Cover for cross beam left		
5	14		Hexagonal flower pan head screw	M 5 × 12	
6	1	0558 102 841	Top panel		
7	12		Hexagon flower pan head tapping screw	ST4.2*9.5-F	
8	11		Hexagonal flower pan head screw	M 4 × 12	
9	2	0558 103 021	Rubber wheel		
10	1		Drag welding		
11	1		Flat washer		
12	1		Standard spring washer	Φ16	
13	1		Cap nut	M 6	
14	1	0558 102 842	Left panel		
15	1		Screw		
16	1	0558 103 032	Swivel caster		
17	2	0558 103 033	Front panel fixing plate		
18	1	0558 102 843	Hall sensor		
19	1	0558 103 035	Right panel down		
20	2	0558 102 852	Limit hinge		
21	1	0558 102 853	Right superior plate		
22	2	0558 103 038	Door lock		
23	4		Hexagonal flower pan head screw	M5 × 16	
24	1	0558 102 854	Flap window		
25	1		Iron Chain		



1.2 Rear panel assembly

C = Component designation in the circuit diagram					
Item	Qty	Ordering no.	Denomination	Notes	C
1	1	0558 103 067	Rear panel		
2	1	0558 102 858	Gas valve	PCF8-M10 × 1	
3	1	0558 102 855	Air valve connector socket		
4	1	0558 103 070	Switch		
5	1	0558 103 071	External forced cable fixing head		
6	1	0558 103 072	Power supply cable		
7	4		Hexagonal flower pan head screw	M5 × 10	
8	4		Hexagonal flower pan head screw	M4 × 12	
9	1	0558 103 073	Filter capacitor	DMJ-MT 40uF ±5%/800 V DC	

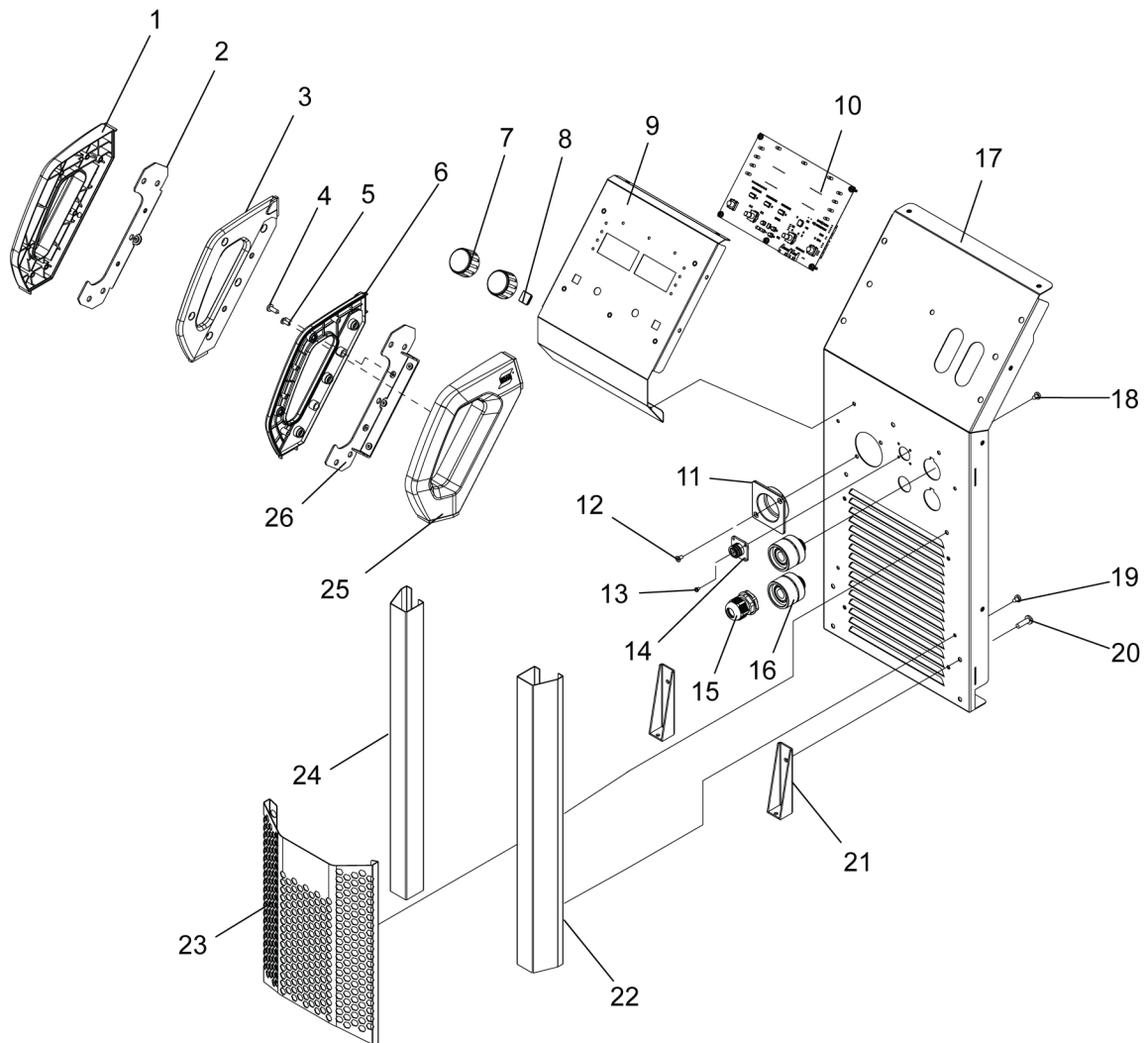


1.3 Front panel assembly

C = Component designation in the circuit diagram					
Item	Qty	Ordering no.	Denomination	Notes	C
1	1		Plastic left-handle	See item 101	
2	1		Plastic handle left (inner side)		
3	1		Plastic handle left (outer side)		
4	5		Hexagon flower pan head tapping screw	M4 × 12, see item 101	
5	5		Hexagon flower pan head tapping screw	M4 × 12, see item 102	
6	1		Plastic right handle	See item 102	
7	2	0558 103 054	Potentiometer knob		
8	1	0558 103 055	Rubber knob		
9	1	0558 103 056	Front panel upper		
10	1	0558 103 057	Panel control board		1AP1
11	1	0558 102 844	Insulating flange machining		
12	4		Cross-recessed pan head screw assembly	M4 × 12	
13	4		Phillips countersunk screw	M4 × 12	
14	1	0558 103 060	Trigger socket harness	M3 × 8	
15	1	0558 103 071	External forced cable fixing head		
16	2	0464 671 004	Quick socket		
17	1	0558 102 845	Front panel		
18	4		Cross-recessed hexagon bolt assembly	M6 × 12	
19	4		Hexagonal flower pan head screw	M5 × 10	
20	4		Hexagonal flower pan head screw	M4 × 12	
21	1	0558 103 063	Intensive support		
22	1	0558 103 066	Front panel decorative beam right		
23	1	0558 102 846	Front panel louver		
24	1	0558 103 064	Front panel decorative beam		
25	1		Plastic handle right (inner side)	See item 102	
26	1		Plastic handle		

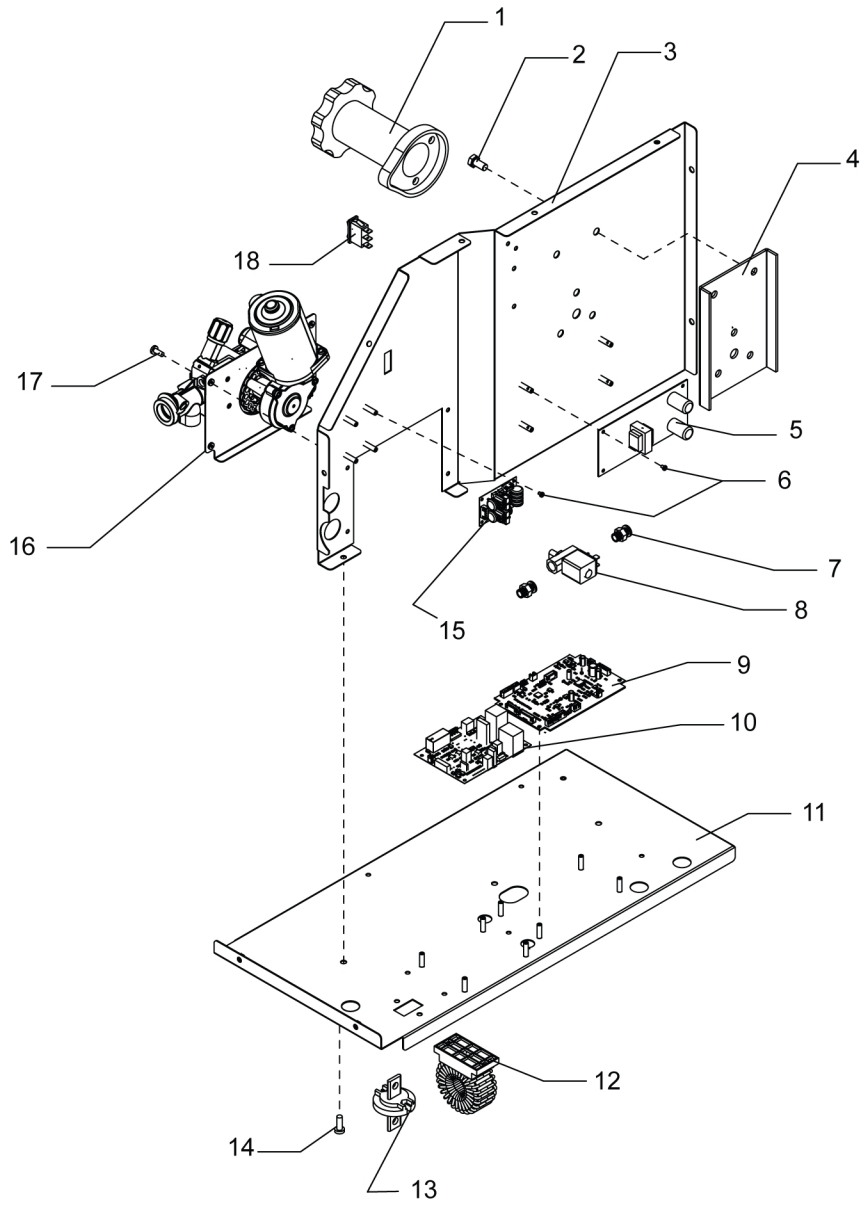
1 SPARE PARTS

Item	Ordering no.	Denomination	Notes	C
101	0558 102 870	Left handle kit	Including items 1,2,3,4 (5 qty)	
102	0558 102 871	Right handle kit	Including items 5 (5 qty),6,25,26	



1.4 Intermediate plate assembly

C = Component designation in the circuit diagram					
Item	Qty	Ordering no.	Denomination	Notes	C
1	1	0558 103 074	Spool shaft		
2	2		Hexagon bolt	M8 × 25/8.8	
3	1		Middle panel		
4	1	0558 103 076	Spool shaft plate		
5	1	0558 103 077	Switch power board		
6	16		Cross-recessed pan head screw assembly	M3 × 8	
7	2	0558 102 856	Gas connector		
8		0558 102 847	Solenoid valve		
9	1	0558 103 079	Main control board		20AP1
10	1	0558 103 080	Wire feeder board		13AP1
11	1		Mounting panel		
12	1	0558 103 082	PFC sensor		
13	1		Hexagonal flower pan head screw	M5 × 12	
14	1	0558 103 083	Binding post		
15	1	0558 103 078	Filter board		2AP1
16	1	0558 102 857	Feeder mechanism	With motor, see " <i>Feeder mechanism module</i> ", page 12	
17	1		Hexagonal flower pan head screw	M4 × 12	
18	4	0558 103 087	Inch wire switch wire		

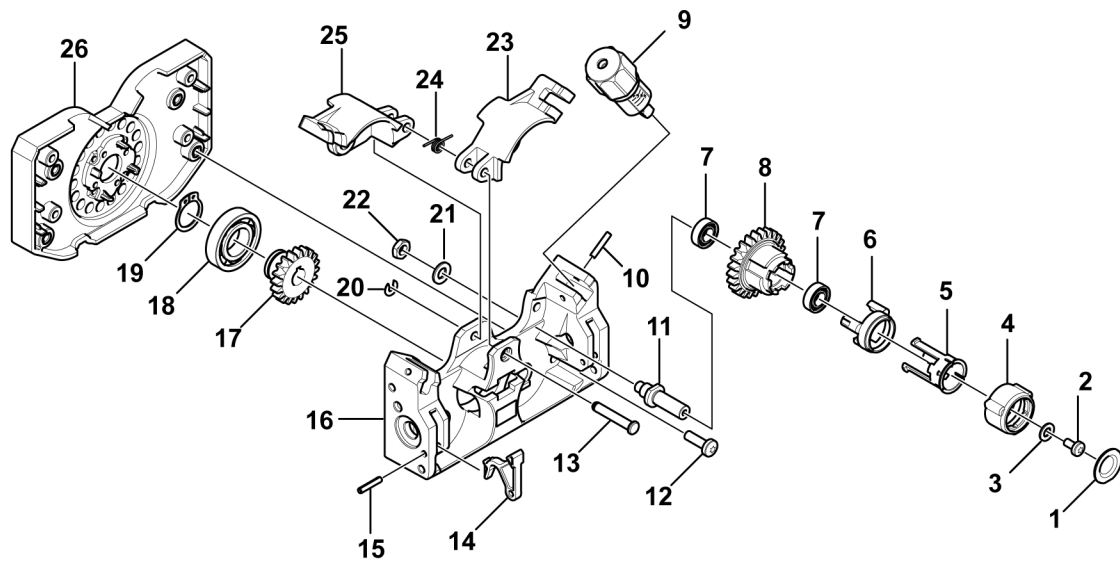
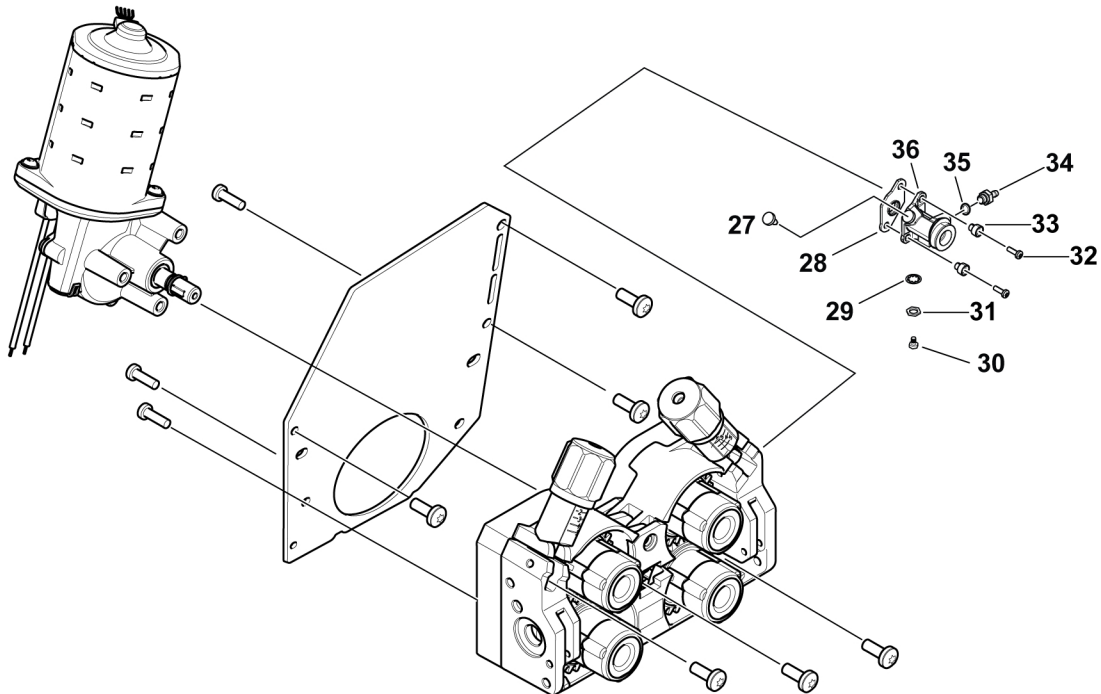


1.5 Feeder mechanism module

Item	Qty	Ordering no.	Denomination	Notes	C
1	4		Cover	See item 105.	
2	4		Screw MRT M4 × 8	See item 105.	
3	4		Washer M4	See item 105.	
4			Bezel	See item 105.	
5	4		Retainer	See item 105.	
6	4		Driver	See item 105.	
7	8		Bearing 8 × 16 × 5	See item 105.	
8	4		Gear hub	See item 105.	
9	2	0445 831 880	Tensioner unit assembly		
10	4		Spring pin, Ø3×16		
11	4	0445 841 001	Feed roll shaft		
12	4		Screw MRT M5 × 16		
13	1		Swing arm shaft	See item 104 and 106.	
14	2	0446 059 001	Nozzle lever		
15	4		Spring pin, Ø3 × 16	See item 106.	
16	1		Front plate	See item 106.	
17	1	0445 820 001	Motor pinion	See item 106.	
18	1		Bearing, 17 × 35 × 8 mm	See item 103.	
19	1		Lock ring Ø17	See item 103.	
20	1		Circlip Ø6/4	See item 104.	
21	4		Cup spring		
22	4	0349 312 091	Hexagon thin nut		
23	1	0445 818 001	Swing arm right	See item 106.	
24	1	0445 839 001	Lift spring	See item 104 and 106.	
25	1	0445 818 002	Swing arm left	See item 106.	
26	1		Backplate	See item 106.	
27	1	0446 026 001	Thumb screw		
28	1	0445 815 001	Torch connector insulator		
29	2		Spring washers	M10	
30	1		Screw M6S 10 × 20		
31			Washer 10,5		
32	2	0194 277 329	Screw MRT M5 × 16		
33	1	0445 815 001	Screw insulator		
34	1		Gas connector		
35	1		O-ring		
36	1	0445 809 002	Tweco 4 connector		

1 SPARE PARTS

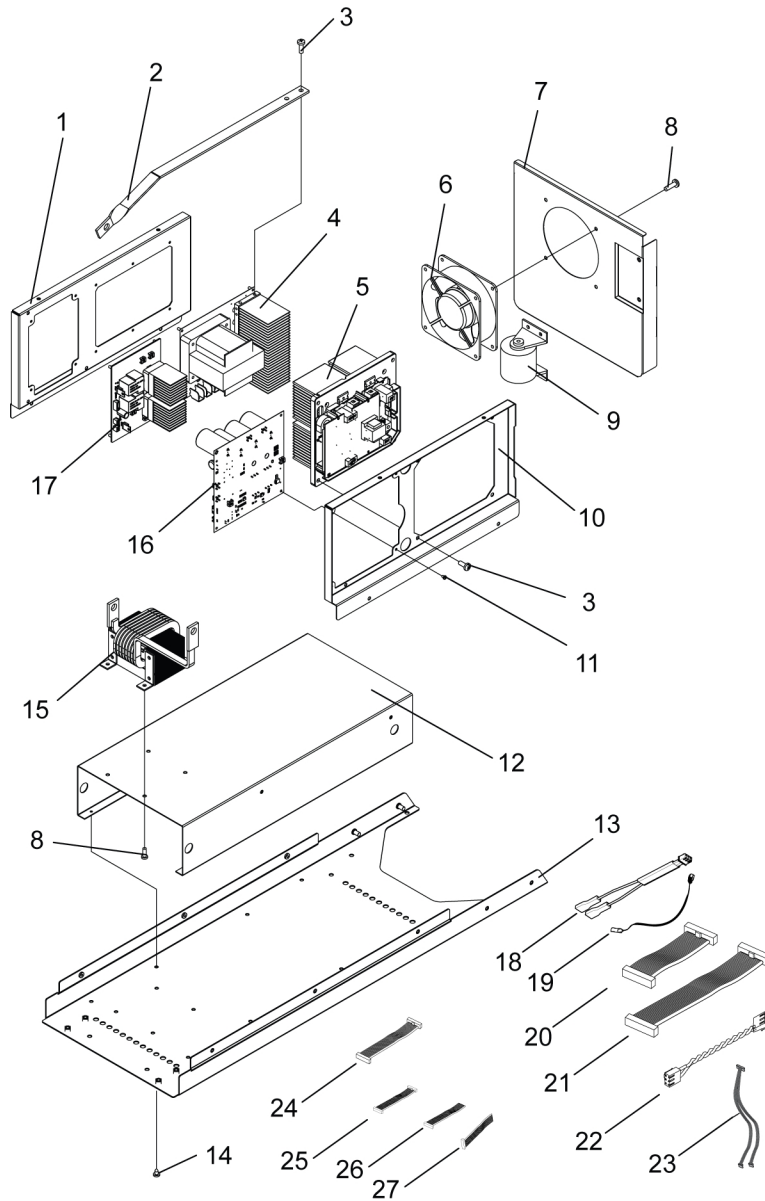
Item	Ordering no.	Denomination	Notes	C
103	0464 667 883	Bearing and lock ring kit	Including items 18,19	
104	0464 667 887	Swim arm shaft kit	Including items 13,20,24	
105	0464 667 893	Gear hub complete kit	Including items 1-8	
106	0464 667 886	Feeder mechanism kit	Including items 10, 13,16,17,23,24,25,26	



1.6 Bottom panel assembly

C = Component designation in the circuit diagram					
Item	Qty	Ordering no.	Denomination	Notes	C
1	1		Radiator left windshield		
2	1	0558 103 040	Bus bar		
3	2		Cross-recessed pan head screw assembly	M5 × 12	
4	1	0558 103 041	Output rectifier plate		
5	1	0558 103 042	IGBT heat sink		
6	1	0558 103 043	Fan		
7	1		Fan fixing board		
8	4		Cross-recessed pan head screw assembly	M5 × 16	
9	1	0558 103 045	Filter capacitor		
10	1		Radiator right windshield		
11	4		Phillips screw	M3 × 6	
12	1	0558 103 047	Movement support		
13	1		Chassis plate		
14	4		Cross-recessed pan head screw assembly	M5 × 16	
15	1	0558 103 049	Reactor		
16	1	0558 103 050	PFC power amplifier board		
17	1	0558 103 051	Input rectifier board		27AP1
18	1	0558 102 859	Wiring harness, gas valve	Connection from CN16 (20AP1) of main control board to gas valve	
19	1	0558 102 860	Wire harness, PWR amplifier	Connection from CN1-1(20AP1) of power amplifier board to CN9 of main control board	
20	1	0558 102 861	Ribbon cable, power supply board	Connection from CN3 (20AP1) of the power supply board to CN6 (15AP1) of the main control board	
21	1	0558 102 862	Ribbon cable, feeder board	Connection from CN102 (13AP1) wire feeder board to CN7 (20AP1) of main control board	
22	1	0558 102 863	Ribbon cable, panel	Connection from CN11 (1AP1) of Panel to CN8 (20AP1) of main control board	

C = Component designation in the circuit diagram					
Item	Qty	Ordering no.	Denomination	Notes	C
23	1	0558 102 864	Wiring harness, remote EMI	Connection from CN1 of remote to CN104 (13AP1) of the wire feeder	
24	1	0558 102 865	Ribbon cable, I/P rectifier	Connection from CN1 (27AP1) of input rectifier board to CN15 (20AP1) main control board	





A WORLD OF PRODUCTS AND SOLUTIONS.



For contact information visit <http://esab.com>

ESAB Corporation, 2800 Airport Road Denton, TX 76207, USA, Phone +1 800 378 8123

manuals.esab.com

